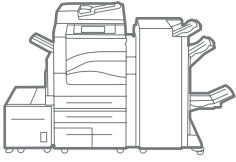


WorkCentre®
7525 / 7530 / 7535 / 7545 / 7556
Tabloid-size
Color
Multifunction Printer



Xerox® WorkCentre®
7500 Series Multifunction Printer
Superior color.
Solid performance.



WorkCentre® 7500 Series Multifunction Printer

The print quality you need to succeed. With the Xerox WorkCentre 7500 series multifunction printer, you'll achieve high-impact color documents that impress customers and deliver results — while minimizing costs.



Get high-resolution color where it counts. The WorkCentre 7500 series multifunction printer gives your business documents the competitive edge.

Take color to a whole new level

The Xerox WorkCentre 7500 series, with advanced Hi-Q LED technology, helps you create professional-looking documents at the touch of a button.

- **High-resolution output, highly impactful documents.** With 1200 x 2400 dpi, photo-quality color images and rich, crisp text, your output always makes a huge impact.
- **Always accurate image quality.** The WorkCentre 7500 series multifunction printer employs advanced print heads with Digital Image Registration Control Technology, which ensures consistently outstanding image registration.
- **Impressive results.** Print brilliant, attention-grabbing images on a variety of stock as large as 12.6 x 19 in. and on paper weights up to 300 gsm, and take advantage of impressive finishing capabilities from saddle-stitch booklets to folded brochures.
- **Harness the power of Fiery.** Upgrading your WorkCentre 7500 series with an EFI Fiery® network server gives you a host of benefits including easy-to-use color management tools, enhanced productivity and security features and flexible workflow tools.



Original photo not right? Use the Color By Words drop-down list and choose "yellow-green colors a lot more green," and "red colors a lot more saturated." Picture-perfect results.

Color By Words: Unique color control

Have you ever wanted to change the color of one object or area in a printout without affecting the rest of the page? With the Color By Words feature there is no need to go back to square one and manipulate source files. You simply select the desired color modifications from a drop-down list, and Color By Words will adjust your printout.

High-impact features, exceptional value. The WorkCentre 7500 series multifunction printer delivers more of the functions and capabilities your office needs.

More standard features

- Print from and Scan to USB device
- Hard Disk Overwrite and 256 bit Encryption
- Scan to Email, Mailbox, Network
- Earth Smart Print Setting
- On-box Optical Character recognition, searchable PDF
- True Adobe® PostScript®, PCL® and XPS



The convenient front-panel USB port makes it fast and easy to print from or scan to any standard USB memory device.



WorkCentre 7556 shown with High Capacity Tandem Tray configuration, optional Convenience Stapler and Work Surface, optional High Capacity Feeder, and optional Professional Finisher.

Maximize your investment

The WorkCentre 7500 series multifunction printer is engineered to give you the reliable operation you demand, with a high-value lineup of standard features and functions.

- **Reduce outsourcing costs.** Bring expensive printshop operations in-house with powerful finishing options that include everything from folded brochures to saddle-stitched booklets, on media up to 12 x 18 in.

- **Manage print costs.** Use Xerox Standard Accounting tools to control print quantities and charge-back options. Plus, color authorization via MS Active Directory™ makes it easy to integrate the WorkCentre 7500 series with existing IT systems.
- **Customize your print driver's default application settings.** Now you can choose default settings per application, such as always printing MS Outlook emails in black-and-white, PowerPoint presentations in duplex mode, and more.



The support you need, right at the device

Xerox Online Support keeps you up and running by providing instant access to searchable online help right at the WorkCentre 7500 series multifunction printer's front panel. You get the same information our Product Support Specialists use when resolving printer problems, assisting with error codes, print quality, media jams, software installation, and more.

Scale up your productivity.

Work faster and more efficiently with industry-leading performance and convenience features that simplify document management.

Get more work done in less time

The WorkCentre 7500 series backs up high-quality color output with outstanding performance in every category.

- **Get fast results.** Experience high output performance with print speeds up to 50 ppm color and up to 55 ppm black and white, with a first-page-out-time as fast as 5.8 seconds.
- **Keep the busiest workgroups productive.** Robust concurrent processing and massive 2GB system memory and 1GB page memory handle multiple complex jobs with ease.
- **Networked to share.** Gigabit Ethernet is standard, and everyone, regardless of environment – Microsoft Windows®, Apple Macintosh® and Linux – can tap into the power of the WorkCentre 7500 series.

- **Print without delay.** Our Smart RIP technology allows the first page to start printing while subsequent pages are still processing.
- **Maximize uptime.** Generous, scalable paper-handling options support media capacities up to 5,140 sheets in a wide variety of media sizes, types and weights.
- **Reduce network traffic.** Access scanned documents faster with advanced file compression techniques that dramatically shrink file sizes, reduce storage space requirements and cut down on document traffic on your network.
- **Scan faster.** The WorkCentre 7500 series multifunction printer quickly scans your documents at up to 70 images per minute.
- **Xerox Smart Kit® technology.** Easy-to-change critical components of the WorkCentre 7500 series are constantly monitored to predict and prevent downtime.

Streamline operations with powerful convenience features

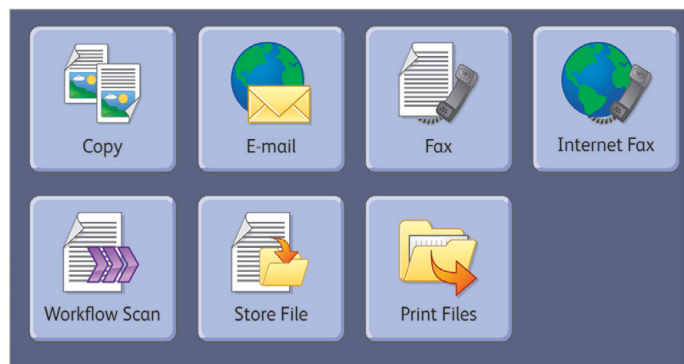
At the touch of a button, all users can print, scan, copy and fax documents with ease, giving them more time to focus on the tasks at hand.

- **Walk-up simplicity.** Print from and scan to any USB memory device for faster document delivery when you're not at your computer.
- **Your job, your priority.** Our Print Around feature lets your job move ahead of stalled documents in the queue.
- **Easy document management.** Index, archive and retrieve scanned documents right from the front panel.
- **Advanced, paperless faxing.** Your users can send and receive faxes without leaving their desks. LAN fax sends faxes directly from applications on your desktop. Plus, fax-forwarding lets you forward incoming faxes to an email address or a document repository as secure, searchable PDFs.

Simplified user experience

Spend less time on support and more time getting the job done with simple-to-use interfaces that make it easy to find and manage features.

- The WorkCentre 7500 series features intuitive commands and navigation that make it easy to find the right function, fast.
- A simplified user interface for Web, PC and front panel operations keeps learning to a minimum.
- On-board information pages give you flexibility over hard copy documentation. Access and print documentation about how to use particular features and functions right from the device's front panel.



The innovative touch screen on the WorkCentre 7500 series front panel makes walk-up operation simple as can be. It features bright icons and intuitive navigation for optimal ease-of-use.

Strengthen the power of your enterprise. Add powerful network-device and document management capabilities to your business, and you can exchange and access information while producing fast output from any location, securely.

Powerful document management

Eliminate redundancies and maintain network efficiency with easy-to-use network management tools that let you access, manage and print documents anywhere on the network.

- **Full range of scanning solutions.** Simply scan your hard copy documents and get searchable digital files that can be automatically shared via email or network folder, or stored on the device or any USB memory device for true portability. And it all comes standard.
- **Streamline document routing and collaboration.** With the powerful EIP platform, easily create personalized scan menus, retrieve scanned files, and route documents to pre-assigned destinations with one click of a button.

Fleet device management

Powerful applications simplify device monitoring and administration.

- **Single print driver works with all printers.** The Xerox® Global Print Driver® supports Xerox and non-Xerox devices on the network. Never have to redeploy another print driver, saving hours of downtime.
- **Bi-Directional status.** Xerox print drivers integrate powerful bi-directional tools that offer real-time status and automatically detect and install new device options such as paper trays and finishers.
- **Application defaults.** Users can save print feature defaults and automatically apply those settings each time they print from that application. For example, print all presentations in color and emails in black-and-white.
- **Configure once, apply fleet wide.** Xerox multifunction device configurations can be cloned and distributed to all similar multifunction devices on your network, eliminating the need to configure and manage each device individually.

Total security — standard

The Xerox® WorkCentre 7500 series helps you protect vulnerable access points and comply with the latest security standards.

- **Prevent unauthorized access.** Powerful authentication features such as network authentication, smart cards, and role-based and function-level login ensure only authorized users can access the device.
- **Keep your documents safe at all times.** With Secure Print, jobs are stored in a separate queue until the appropriate user chooses which jobs to release for printing. Plus, users can enter their “User ID” when sending jobs to the WorkCentre 7500 series via Secure Print, and then release them upon authentication at the device.
- **Maintain information integrity.** Hard disk encryption and overwrite uses the FIPS 140-2 standard to ensure your data stays secure.
- **Proven security with closed-loop response.** The WorkCentre 7500 series has achieved Common Criteria EAL2+ conformant with 2600.2 protection profile for hardcopy devices. This ensures end-to-end protection and with our proactive response system we keep devices and information secure by identifying potential vulnerabilities and providing quick updates.

Environmentally sound

The WorkCentre 7500 series delivers cutting-edge reductions in energy consumption.

Energy saving performance

- **Low energy consumption.** The WorkCentre 7500 series consumes less power in standby, low power and operating modes, resulting in greater energy savings in the office.
- **Fast warm up.** Ready when you are, the WorkCentre 7500 series recovers from sleep mode in less than 10 seconds.

Responsible printing

- **Earth-smart.** Our innovative new Earth Smart feature allows you to choose the most environmentally sensitive options for your job.

- **Print only what you need.** When enabled, the Hold All Jobs feature stores a user’s print jobs at the device until released for printing from that user’s “My Jobs” print queue. This reduces paper usage by ensuring that users print only the pages they need.

Cutting-edge technology

- **EA Ultra Low-Melt toner.** Our EA Ultra Low-Melt toner achieves minimum fusing temperature at 68 degrees F (20 degrees C) lower temperature than conventional toner for even more energy savings and brilliant glossy output even on ordinary paper.

- **Induction heating.** The newly developed, heat-efficient IH fuser consumes substantially less power in standby mode and achieves a start-up time of less than 15 seconds.

- **Hi-Q LED Print engine.** Proven Hi-Q LED print engine technology consumes less energy and space and produces less noise, while printing resolutions of 1200 x 2400 dpi.

Environmentally compliant

- **The WorkCentre 7500 series meets stringent environmental standards:** ENERGY STAR®, Reduction of Hazardous Substances (RoHS) Directive, Waste Electrical and Electronic Equipment Directive (WEEE), Blue Angel and ECO label.

Xerox® Workflow Solutions take your WorkCentre 7500 series multifunction printer to a higher level of office optimization.

Xerox Workflow Solutions make your office more productive.

The power of Xerox Workflow Solutions—an added ingredient inside most Xerox MFPs—is the technology’s ability to transform the way your organization gets vital work done. When people work efficiently, in less time and with fewer steps, productivity goes up. Stress goes down. So do errors. Whether you have only a few people on your team or a very large workgroup, Xerox offers a wide range of MFPs that deliver flexibility and advanced features to copy, print, scan and fax—all from one device. It’s about streamlining your workflow and it starts by using Xerox Workflow Solutions right from your MFP.

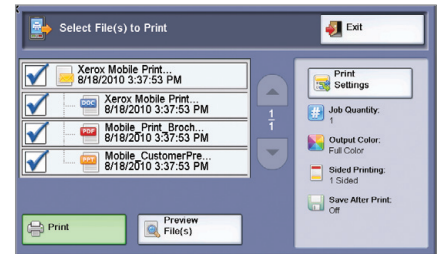
Xerox Mobile Print Solution

With Xerox, being mobile has never been easier. Xerox makes mobile printing simpler and more convenient, while keeping your business secure. That’s why we’re empowering today’s mobile professionals with the freedom to send print jobs from any e-mail-enabled device

Simple. There’s no software to load on the mobile device, no searching for online printer information, or time wasted looking for the right application. This solution works with any e-mail-enabled device. Plus, there’s no dependence on administrative support staff for printing tasks.

Convenient. Whether they’re traveling or working between offices, users will be able to print MS Office documents, including MS Word, Excel® and PowerPoint®, as well as PDFs.

Secure. Mobile workers can print directly from their mobile devices and retrieve documents at a Xerox-enabled MFP with a secure confirmation code. Mobile professionals will no longer have to rely on others to print sensitive documents or risk leaving prints in the output tray.



Personalized solutions you access right from the touch screen interface.

Nuance eCopy ShareScan 5.0

eCopy® ShareScan® Suite 5, the new release of the best-selling document scanning and workflow solution for Xerox networked multifunction printers (MFPs). eCopy ShareScan provides organizations with everything needed to automate their paper-to-digital workflows, letting office workers scan paper documents easily and securely using existing investments in network MFPs and scanners.

Powerful cost control features

The WorkCentre 7500 series multifunction printer provides multiple levels of cost-control capabilities, giving you the control you need for limiting, tracking and assigning costs.

Limit and track usage

With Xerox Standard Accounting, administrators can track copy, scan, print and fax jobs as well as manage user’s access to color copies and prints. Set limits for individual users on the number of print, copy, scan, and fax jobs, and account for device activity down to the user, group or department level.

Set print restrictions

Xerox user permissions provide the ability to restrict access to print features by user, by group, by time of day, and by application. Users and groups can be set up with varying levels of access to print features. For example, limits can be set that allow color print jobs only during certain hours of the day; PowerPoint presentations automatically print in duplex mode; or Outlook e-mails always print in black-and- white.

Feature	Name	Print Submitter
Time	Black & White Printing	Unknown
Time	Color Printing	Unknown
Simplex	1-Sided Printing	Unknown
Paper Tray	Tray 1	Unknown
Paper Tray	Tray 2	Unknown
Paper Tray	Tray 3	Unknown
Paper Tray	Tray 4	Unknown
Paper Tray	Tray 5 (Bypass)	Unknown
Job Type	Secure Print	Unknown
Job Type	Normal Print	Unknown
Job Type	Sample Set	Unknown

Set color user permissions and other print restrictions with intuitive graphical interfaces.



1 High-Capacity Feeder holds 2,000 sheets of paper. Choose our 2,180-sheet capacity (3 Tray option) or our 3,140-sheet capacity (High-Capacity Tandem Tray option) model, then add our High Capacity Feeder to bring maximum capacity to 5,140 sheets.

2 Exceptional media flexibility. The WorkCentre 7500 series handles a wider range of media types and weight from more trays than most devices in its class. It supports up to 300 gsm and media sizes up to 12.6 x 19 in.

3 Print envelopes easily using our optional envelope tray (replaces Tray 1).

4 Large work surface (included with Convenience Stapler) gives you plenty of room to sort documents.

5 Xerox Extensible Interface Platform® (EIP) (standard) enables easy creation of customized workflows, letting you personalize scan menus, retrieve scanned files, and route documents to pre-assigned destinations at the push of a button.



6 Office Finisher LX* (optional) gives you advanced finishing functions at a great value.

7 Integrated Office Finisher (optional with 7525/7530/7535) provides 500-sheet stacking and 50-sheet, single-position stapling.


8 Professional Finisher (optional) adds 50-sheet multiposition stapling, hole punch, V-fold and saddle-stitch booklet making.





* shown with optional booklet maker

WorkCentre® 7500 series Quick Facts

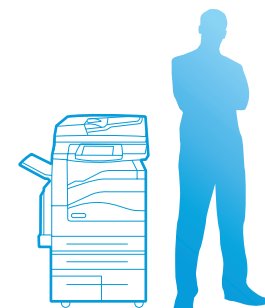
- Print/copy up to 25/30/35/45/50 ppm color and 25/30/35/45/55 ppm black-and-white
- Powerful scan features, including scan to mailbox and network
- Fax solutions available, including network integration
- Maximum paper capacity: 5,140 sheets
- Xerox Extensible Interface Platform (EIP)

 Print / Copy / Scan / Fax / Email

 12 x 18 in. / SRA3

 55 ppm

WxDxH (base):
41.9 x 27 x 44.4 in.
1,064 x 685 x 1,127 mm



WorkCentre® 7525 / 7530 / 7535 / 7545 / 7556

Multifunction Printer

	WorkCentre 7525	WorkCentre 7530	WorkCentre 7535	WorkCentre 7545	WorkCentre 7556
Speed	Up to 25 ppm color / 25 black-and-white	Up to 30 ppm color / 30 black-and-white	Up to 35 ppm color / 35 black-and-white	Up to 45 ppm color / 45 black-and-white	Up to 50 ppm color / 55 black-and-white
Duty Cycle	Up to 75,000 pages / month	Up to 90,000 pages / month	Up to 110,000 pages / month	Up to 200,000 pages / month	Up to 300,000 pages / month
Paper Handling	Duplex Automatic Document Feeder: 110 sheets; Size: 5.5 x 8.5 in. to 11 x 17 in. / 148 x 210 mm to 297 x 420 mm Bypass Tray: 100 sheets; Custom sizes: 3.5 x 3.9 in. to 12.6 x 19 in. / 89 x 98 mm to 320 x 483 mm Tray 1: 520 sheets; Custom sizes: 5.5 x 7.5 in. to 11.7 x 17 in. / 140 x 182 mm to 297 x 432 mm 1 Tray Option (Total 1,140 sheets): Adds one 520-sheet paper tray; Size: 5.5 x 7.2 in. to 12 x 18 in. / 139.7 x 182 mm to SRA3 3 Tray Option (Total 2,180 sheets): Adds three 520-sheet paper trays; Size: 5.5 x 7.2 in. to 12 x 18 in. / 139.7 x 182 mm to SRA3 High Capacity Tandem Tray Option (Total 3,140 sheets): Adds one 520-sheet paper tray, one 867-sheet paper tray and one 1,133-sheet paper tray; Size: 8.5 x 11 in. / A4 High Capacity Feeder (HCF): 2,000 sheets; Size 8.5 x 11 in. / A4 long edge feed Envelope Tray: Up to 60 envelopes: #10 commercial, Monarch, DL, C5, Large U.S. Postcard, A6, Custom sizes: 3.9 x 5.8 in. to 6.4 x 9.5 in. / 98 x 148 to 162 x 241 mm				
Paper input	Standard				
	Choose one				
	Optional				
Paper output/ finishing	Standard	Dual Offset Catch Tray: 250-sheets each Face up Tray: 100 sheets			
	Optional	Office Finisher LX: 2,000-sheet stacker, 50 sheets stapled, 2-position stapling, optional hole-punch, optional booklet maker (score, saddle stitch) Integrated Office Finisher (optional with 7525/7530/7535): 500-sheet stacker, 50 sheets stapled, single-position stapling Professional Finisher: 1,500-sheet stacker and 500-sheet top tray, 50-sheet multiposition stapling and hole punch, saddle-stitch booklet maker, V-Fold Convenience Stapler: staples 50-sheets (based on 20 lb. bond), includes Work Surface			
Copy	13.2 seconds color / 11.1 seconds black-and-white	10.9 seconds color / 8.7 seconds black-and-white	11.0 seconds color / 8.6 seconds black-and-white	7.8 seconds color / 6.6 seconds black-and-white	7.2 seconds color / 5.8 seconds black-and-white
First-page-out-time (as fast as)					
Copy output resolution	1200 x 2400 dpi				
Copy features	Automatic two-sided, Automatic reduction/enlargement, Color touch screen interface, Electronic pre-collation, Automatic tray selection, Build Job, Negative/Mirror image, Booklet creation, Multi-up, Covers and dividers insertion, Sample set, Book copying, Edge erase, Single color, Repeat image, Mixed size originals, Image shift, Store and recall job programming, Annotation, Large job interrupt, Transparencies, Bates stamping, Color presets				
Print	Resolution (max) Up to 1200 x 2400 image quality				
Resolution (max)	Up to 1200 x 2400 image quality				
Processor	1.5 GHz				
Memory (std / max)	2GB system plus 1GB page memory				
Connectivity	10/100/1000BaseT Ethernet, High-Speed USB 2.0 direct print, Wireless Ethernet 802.11b (via third-party adapters)				
Page description languages (standard)	Adobe® PostScript® 3™, PDF, XML Paper Specification (XPS), PCL® 5c / PCL 6 emulations, HP-GL2™				
Hard drive	160 GB				
Print features	Print from USB, Automatic two-sided, Secure Print, Delay print, Earth Smart, Job identification, Sample set, Booklet creation, Cover selection, Inserts and exception pages, Paper selection by attribute, N-up, Watermarks, Banner sheets, Fit to new paper size, Transparency Separators, Output tray selection, Image quality, Toner Saver, Store and recall driver settings, Reduce/enlarge, Mirror image, Bi-directional status, Scaling, Overlays, Print to Fax (requires optional Fax kit), Rotate image, Job Monitoring				
Fax	Standard	Internet Fax, Network Server Fax enablement, print on fax up to 11 x 17 in. / A3, Fax Build Job			
	Optional	Fax Forward to Email or SMB, Walk-up Fax (one-line and two-line options, includes LAN Fax), Various Xerox Business Innovation Partner Solutions			
Scan	Standard	Scan to Network, Scan to Email, Scan to Folder, Scan to SMB or FTP, Text searchable PDF, PDF/A, XPS, Linearized PDF, JPEG, TIFF, Scan to USB memory device			
	Optional	Xerox Scan to PC Desktop®, Various Xerox Business Innovation Partner Solutions, SMARTsend®, Nuance eCopy® ShareScan® 5.0, Xerox SmartDocument Travel®			
Accounting	Xerox Standard Accounting (Copy, Print, Scan, Fax, Email), Additional Network Accounting options available, Various Xerox Business Innovation Partner Solutions				
Security	Standard	Secure Print, Authentication with NDS/LDAP/Kerberos/SMB, Hard disk overwrite security, Password Protected PDF, 256 bit Hard Disk Encryption, FIPS 140-2 Encryption, Encrypted Email (only via CAC), IPsec, 802.1X, SNMP v3.0, Common Criteria Certified (IEEE 2600.2 standard)			
	Optional	Xerox Secure Access Unified ID System®, USB card reader, Common Access Card Enablement Kit			
Operating Systems	Windows XP/Server 2003/Server 2008/Vista/7; Mac OS 10.4-10.6; AIX 5; HP UX 11, 11i; Solaris 9,10; Linux Fedora Core 1-7; Red Hat ES4; SUSE 10.x				
Other Options	EFI Fiery Network Controller, Work Surface (included with Convenience Stapler), Foreign Device Interface, Xerox Copier Assistant®, Unicode Font Kit, Xerox Mobile Print Solution				



For more information, call 1-800-ASK-XEROX or visit us at www.xerox.com/office



©2012 XEROX Corporation. All rights reserved. Contents of this publication may not be reproduced in any form without permission of Xerox Corporation. XEROX® and XEROX and Design® are trademarks of Xerox Corporation in the United States and/or other countries. As an ENERGY STAR® partner, Xerox Corporation has determined that this product meets the ENERGY STAR guidelines for energy efficiency. ENERGY STAR and the ENERGY STAR mark are registered U.S. marks. Terra Choice Environmental Services, Inc., of Canada has verified that these products conform to all applicable Environmental Choice EcoLogo requirements for minimized impact to the environment. All other trademarks are the property of their respective manufacturers. The information in this brochure is subject to change without notice. Updated 3/12 610P730084G W7BBR-01UH