

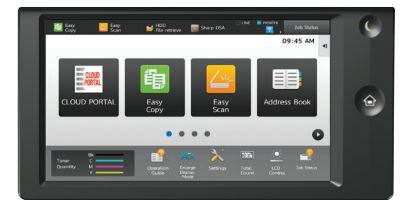
ADVANCED SERIES COLOR DOCUMENT SYSTEMS

The new benchmark of innovation.

The Sharp MX-5070N and MX-6070N Advanced Series color workgroup document systems offer stunning color output with exceptional ease of use. These new models are designed to provide customers with a seamless, intuitive experience, and the confidence in knowing their jobs will come out right the first time, every time. The new color Advanced Series focuses on user operability and draws inspiration from the latest networking and imaging technologies available today, all to create a document system that delivers the productivity you need, with the reliable performance you want.

Key Features

- **Ease of Use** – Sharp's customizable touchscreen display offers a user-friendly graphical interface with a clean design, simplified Easy Modes and integrated operation guides.
- **Integration** – Equipped with the latest version of Sharp OSA® technology for easy integration with network applications and cloud services, these models can unlock advanced capabilities to help you better manage your workflow.
- **Productivity** – An integrated walk-up motion sensor and an easy-to-use graphical interface combine with a 15-second warm up time to create a workflow experience with virtually no waiting time.



Provides up to six paper sources for a maximum paper capacity of 6,300 sheets.



Select staple finishers also offer manual stapling and stapleless stapling.



Sharp's ImageSEND™ feature provides one-touch distribution to email, cloud applications and more.

The Sharp color Advanced Series deliver cutting-edge integration and powerful productivity.

- Automatic **walk-up motion sensor** wakes the machine, and it's ready within 15 seconds.
- Built-in **retractable keyboard** simplifies email address and subject line entries as well as repetitive scanning tasks and user authentication.
- Large 10.1" (diagonally measured) **customizable touchscreen display** with a clean design enables easy access to features and functions when setting up jobs.
- Sharp's **Color Consistency System** with next generation image process control delivers high quality color output and maintains optimum color balance and toner density page after page.
- Easily **access popular cloud applications**, including Microsoft® OneDrive® for Business, SharePoint® Online and Google Drive™ with Sharp's Cloud Connect features.
- **Cloud Portal Office**, a content management software service from Sharp for storing and sharing scanned documents and other electronic files, helps keep your whole team connected.
- **Standard security platform** includes 256-bit encryption, up to 10-times data overwrite and an End-of-Lease feature that erases all data and personal information at trade-in.
- Standard **150-sheet duplexing document feeder** scans both sides of a document in a single pass at speeds up to **200 images per minute (ipm)**, putting less wear on the feeder and your originals, and giving you more time to spend on other tasks.
- **Compact PDF** feature dramatically reduces the file size of scanned color documents, resulting in decreased network traffic and more efficient use of disk and cloud storage.
- Flexible paper handling system supports media up to **110 lb. cover (300 gsm)** and up to **12" x 18"** through the paper trays, allowing you to print on a wide variety of media.

MX-5070N/6070N SPECIFICATIONS

Main Specifications

MX-5070N/6070N	Base models include multitasking controller, 150-sheet DSPF, PCL 6 and Adobe PostScript® 3™ printing systems, network scanning, auto duplexing, 1 x 550-sheet paper drawer, 100-sheet bypass tray. Black and color developer is included.		
Type	Color multi-function digital document system		
Display	10.1" (diagonally measured) color dot matrix high-resolution touch panel tilting display. 1024 x 600 dots (W-SVGA)		
Functions	Copy, print, network print, network scan, document filing and fax ¹		
Copy System	Dry electrostatic transfer/Dual component developer/Magnetic brush development/OPC drums/Belt fusing/white LED exposure		
Originals	Sheets and bound documents		
Max. Original Size	11" x 17"		
Copy Size	Min. 5½" x 8½", Max. 12" x 18"		
Copy Speed	50/60 ppm B&W/Color (8½" x 11")		
Multiple Copy	Max. 9,999 copies		
First Copy Time	MX-5070N	MX-6070N	
Seconds²	Platen Glass	Mono 3.7	Mono 3.7
		Color 4.8	Color 4.8
	DSPF	Mono 6.2	Color 6.2
		Color 8.1	Color 8.1
Warm Up Time	15 seconds or less		
Magnification	25% to 400% in 1% increments (with DSPF 25%-200%)		
Original Feed	150-sheet DSPF with original size detection.		
Scan Speed	Copy: Up to 200 ipm (B&W)/106 ipm (Color) Scan: Up to 200 ipm (B&W/Color)		
Original Sizes	5½" x 8½", 8½" x 11", 8½" x 11" R, 8½" x 14", 11" x 17"		
Paper Capacity	Standard: 650 Sheets/Maximum: 6,300 Sheets		
Paper Feed System	Standard: (1) 550-sheet paper drawer (letter/legal/ledger/statement size) and 100-sheet bypass tray (letter/legal/ledger/statement/envelope size). Optional: Single, double, or triple drawer paper deck (550, 1,100, or 1,650 sheets), split tandem paper drawer (2,100 sheets letter only) plus (1) 550-sheet paper drawer (letter/legal/ledger/statement size).		
Paper Weights and Types	Paper drawers: 18 lb. bond to 110 lb. cover. Split Tandem Tray: 18 lb. bond to 28 lb. bond. Other paper types include plain, pre-printed, recycled, pre-punched, letterhead and color paper. Bypass tray: 16-28 lb. bond (plain paper), 13-16 lb. bond (thin paper), 28 lb. bond-110 lb. cover (heavy paper), 20-24 lb. bond (Monarch/Com-10 envelope), tab paper (letter). Also label paper, gloss paper, pre-printed, recycled, pre-punched, letterhead, color paper and OHP film.		
Duplexing	Standard automatic duplex copying and printing		
CPU	Up to 1.9 GHz multi-processor design		
Interface	10/100/1000 Base-T Ethernet, USB 2.0: 2 host ports (front and rear), 1 available device port (rear), wireless 802.11 a/b/g/n		
Memory	Standard 5 GB copy/print (shared)/Hard Disk Drive: 500 GB		
Hard Disk Drive	500 GB		
Copy Resolution	Scan: Up to 600 x 600 dpi (B&W/Color) Output: Up to 1200 x 1200 dpi (B&W), up to 600 x 600 dpi (Color)		
Color Modes	Auto Color Selection (ACS), Full Color Mode, Monochrome (B/W)		
Exposure Control	Modes: Automatic, Text, Text/Photo, Text/Printed-Photo, Printed-Photo, Photo, Map, Pale-Color Document. Settings: Auto or 9 step manual		
Halftone	256 gradations/2 levels (monochrome)		
Copy Features	Scan-Once Print-Many, electronic sorting, offset-stacking, Auto Color Selection (ACS), Auto Paper Selection (APS), Auto Magnification Selection (AMS), Auto Tray Switching (ATS), black-white reversal, blank page skip, book copy, book divide, card shot, center erase, centering, cover pages, dual page copy, edge erase, image edit, image preview, insert pages, job build, job programs, margin shift, mirror image, mixed size original, multi-page enlargement, original count, pamphlet style, proof copy, repeat layout, reserve copy, rotated copy, stamp, stamp custom image, suppress background, tab copy, tab-paper insertion, tandem copy, toner save mode, transparency inserts, watermark, 2-in-1 / 4-in-1 / 8-in-1 multi shot		
Account Control	Up to 1,000 users. Supports user-number authentication, login name/password or login name/LDAP password		
Output Tray Capacity	Center Exit Tray (Main): 250 sheets (face down) Job Separator (Upper Tray): 100 sheets (face down) Right Side Exit Tray: 100 sheets (face down)		

Main Specifications (continued)

Cloud Supported Services	Sharp Cloud Portal Office, Google Cloud Print, Google Drive, OneDrive for Business, SharePoint Online		
Network Protocols	TCP/IP (IPv4, IPv6, IPsec), HTTP/HTTPS, IPP/IPP-SSL, FTP/FTPS, SNMPv3, SMTP/SMTP-SSL, POP3/POP3-SSL, LDAP/LDAP-SSL, 802.1x for Windows and Unix.		
Network Security	Includes IP/MAC address filtering, protocol filtering, port control, user authentication (local/LDAP/Active Directory [®]), TLS Encryption, Kerberos support		
Firmware Management	Flash ROM with local (USB), network update capability and firmware update 1 to N with SRDM (Sharp Remote Device Manager)		
Device Setup	Web-based management/cloning with user/administrator level login		
Service/Functions	Remote Front Panel, remote access to service logs and click counts		
Accessibility Features	Free stop tilting front panel, adjustment of key touch sound and speed, concave key, document feeder free stop, job programs, remote front panel, universal grip for paper trays and disable screen timeout		
Environmental Standards	International Energy Star Program Ver. 2.0, European RoHS, Blue Angel (RAL-UZ171)		
Power Source	110-127 V AC, 60 HZ, 20 A Receptacle		
Power	1.92 kW or less		
Consumption			
Weight	Approx. 198 lbs.		
Dimensions	Approx. 24" (w) x 26" (d) 33" (h)		
Network Printing System			
PDL	Standard PCL® 6 compatible, Adobe® PostScript® 3™		
Resolution	1200 x 1200 dpi		
Print Speed	50/60 pages per minute (8½" x 11")		
Print Drivers	Windows Vista, Windows 7, Windows 8, Windows 8.1, Windows 10, Windows Server® 2008, Windows Server 2008 R2, Windows Server 2012, Windows Server 2012 R2, Windows PPD, MAC OS X® (including 10.4 to 10.11), all MAC PPD, Linux® PPD		
Mobile Printing	AirPrint™, Android™ printing framework (Sharp Print Service Plugin), Mopria™ Print Service, Sharpdesk Mobile ³		
Print Features	Auto configuration, serverless print release, bar code font printing, carbon copy print, chapter inserts, color adjustment settings, color mode, confidential print, continuous printing, custom image registration, different cover page/last page/other page, document control, document filing, duplex printing, electronic sorting, folding, form overlay, hidden pattern print, image rotation, image stamp, image type, job bypass print, job retention, layout print, margin shift, multiple pamphlet, network tandem print, N-up printing, offset stacking, page interleave, pamphlet style, poster print, proof print, print and send, punching, stapling, tab paper print, tab printing, toner save mode, transparency inserts, tray status, user authentication, watermarks, zoom print		
Direct Printing	File Types: TIFF, JPEG, PCL, PRN, TXT, PDF, Compact PDF, Encrypted PDF, PostScript, DOCX, XLSX, PPTX, and PNG. Methods: FTP, SMB, Web page, Email and USB memory		
Resident Fonts	80 outline fonts (PCL), 139 fonts (PS)		
Interface	RJ-45 Ethernet 10/100/1000 Base-T, USB 2.0, Wireless		
Operating Systems and Environments	Windows Vista, Windows 7, Windows 8, Windows 8.1, Windows 10, Windows Server® 2008, Windows Server 2008 R2, Windows Server 2012, Windows Server 2012 R2, Mac OS X 10.4-10.11, UNIX®, Linux, Citrix® (XenApp 5.0-7.6), Windows Remote Desktop Services, SAP device types ¹		
Printing Protocols	LPR, IPP, IPPS, PAP, Raw TCP (port 9100), FTP, POP3, HTTP, Novell Pserver/Rprinter, LPD and LPR for Unix		
Network Scanning System			
Scan Modes	Standard: Color, monochrome, grayscale		
Max. Original Size	11" x 17"		
Optical Resolution	600 dpi		
Output Modes	600 dpi, 400 dpi, 300 dpi, 200 dpi, 150 dpi, 100 dpi		
Image	Monochrome Scanning: Uncompressed, G3 (MH), G4 (MR/MMR)		
Compression	Color/Grayscale: JPEG (high, middle, low) Internet Fax mode: MH/MMR (option) ¹		

Network Scanning System (continued)

Image Formats	Monochrome: TIFF, PDF, PDF/A, Encrypted PDF, XPS, Searchable PDF, DOCX, XLSX, PPTX, TXT, and RTF. Color/Grayscale: TIFF, JPEG, PDF, PDF/A, Compact PDF, Encrypted PDF, XPS, Searchable PDF, DOCX, XLSX, PPTX, TXT and RTF. Internet Fax: TIFF-FX, TIFF-F, TIFF-S ¹		
Scan Destinations	Email, Desktop, FTP, Folder (SMB), USB, Internet fax (option), Super G3 fax (option)		
One-touch Destinations	Up to 2,000 (combined scan destinations)		
Group Destinations	Up to 500		
Programs	48 (combined)		
Max. Jobs	Up to 100		
Enhanced Email Integration	Standard Gmail connector, standard Exchange connector (on-premises)		
Scanning Protocols	HTTP/HTTPS, FTP/FTPS, SMTP/SMTP-SSL/ESMTP, SMB, POP3, LDAP, S/MIME		
Software	Sharpdesk® desktop personal document management software (1 user license included), Sharpdesk Mobile (download)		
Optional Equipment			
MX-60ABD	Deluxe Copier Cabinet Base (with front door)		
MX-DE25	Stand/1 x 550-sheet Paper Drawer		
MX-DE26	Stand/2 x 550-sheet Paper Drawers		
MX-DE27	Stand/3 x 550-sheet Paper Drawers		
MX-DE28	Stand/1 x 550 + 2,100-sheet Split Tandem Paper Drawers		
MX-DE29	Low Stand/1 x 550-sheet Paper Drawer		
MX-LC17	3,000-sheet Large Capacity Cassette (letter, requires MX-DE25/26/27/28) ²		
MX-LT10	Long Paper Feeding Tray		
MX-FN27	50-sheet Staple Inner Finisher		
MX-FN28	1K Stacking 50-sheet Staple Finisher		
MX-FN29	1K Stacking 50-sheet Staple/Saddle Stitch Finisher		
MX-FN30	3K Stacking 65-sheet Staple Finisher ⁵		
MX-FN31	3K Stacking 65-sheet Staple/Saddle Stitch Finisher ⁵		
MX-RB25	Paper Pass Unit (required for MX-FN28/29/30/31)		
MX-PN14B	3-Hole Punch Unit (requires MX-FN27)		
MX-PN15B	3-Hole Punch Unit (requires MX-FN28/29)		
MX-PN16B	3-Hole Punch Unit (requires MX-FN30/31) ⁵		
MX-SCX1	Staple Cartridge for MX-FN27/28/29		
AR-SC2	Saddle-stitch Staple Cartridge for MX-FN29		
MX-SC11	Staple Cartridge for MX-FN30/31		
MX-SC12	Saddle-stitch Staple Cartridge for MX-FN31		
MX-TR19	Right Side Exit Tray		
MX-TR20	Job Separator Tray		
MX-TU16	Center Exit Tray		
MX-UT10	Utility Table		
MX-FX15	Fax Expansion Kit		
MX-FWX1	Internet Fax Kit		
MX-PF10	Bar Code Font Kit		
AR-SU1	Stamp Unit (requires AR-SV1 Stamp Cartridge)		
AR-SV1	Stamp Cartridge		
MX-AMX1	Application Integration Module		
MX-FRS2U	Commercial Data Security Kit (not available at time of launch)		
DVENDFS	Generic Vendor Interface Kit		
Supplies			
MX-60NTBA	Black Toner Cartridge		
MX-60NTCA	Cyan Toner Cartridge		
MX-60NTMA	Magenta Toner Cartridge		
MX-60NTYA	Yellow Toner Cartridge		
MX-60NVBA	Black Developer		
MX-60NVSA	Cyan/Magenta/Yellow Developer		
MX-60NRSA	Drum		
MX-607HB	Toner Collection Container		

¹ Some features require optional equipment. See your local dealer.

² May vary depending on product configuration, machine settings and operating and/or environmental conditions.

³ Go to www.sharppusa.com for a list of supported devices and operating systems.



SHARP ELECTRONICS CORPORATION
100 Paragon Drive, Montvale, NJ 07645
1-800-BE-SHARP • www.sharppusa.com

Design and specifications subject to change without notice. Sharp, Sharp OSA, Sharpdesk, My Sharp and all related trademarks are trademarks or registered trademarks of Sharp Corporation and/or its affiliated companies. Windows, Windows Server, Excel, PowerPoint, OneDrive and SharePoint are registered trademarks of Microsoft Corporation. Android, Google Drive, Google Cloud Print and Chromebook are registered trademarks of Google Inc. AirPrint is a registered trademark of Apple Inc. Mopria is a trademark of Mopria Alliance, Inc. Adobe and PostScript are registered trademarks of Adobe Systems Inc. DirectOffice is a trademark of CSR Imaging US, LP, registered in the United States and other countries, used with permission. All other trademarks are the property of their respective owners.